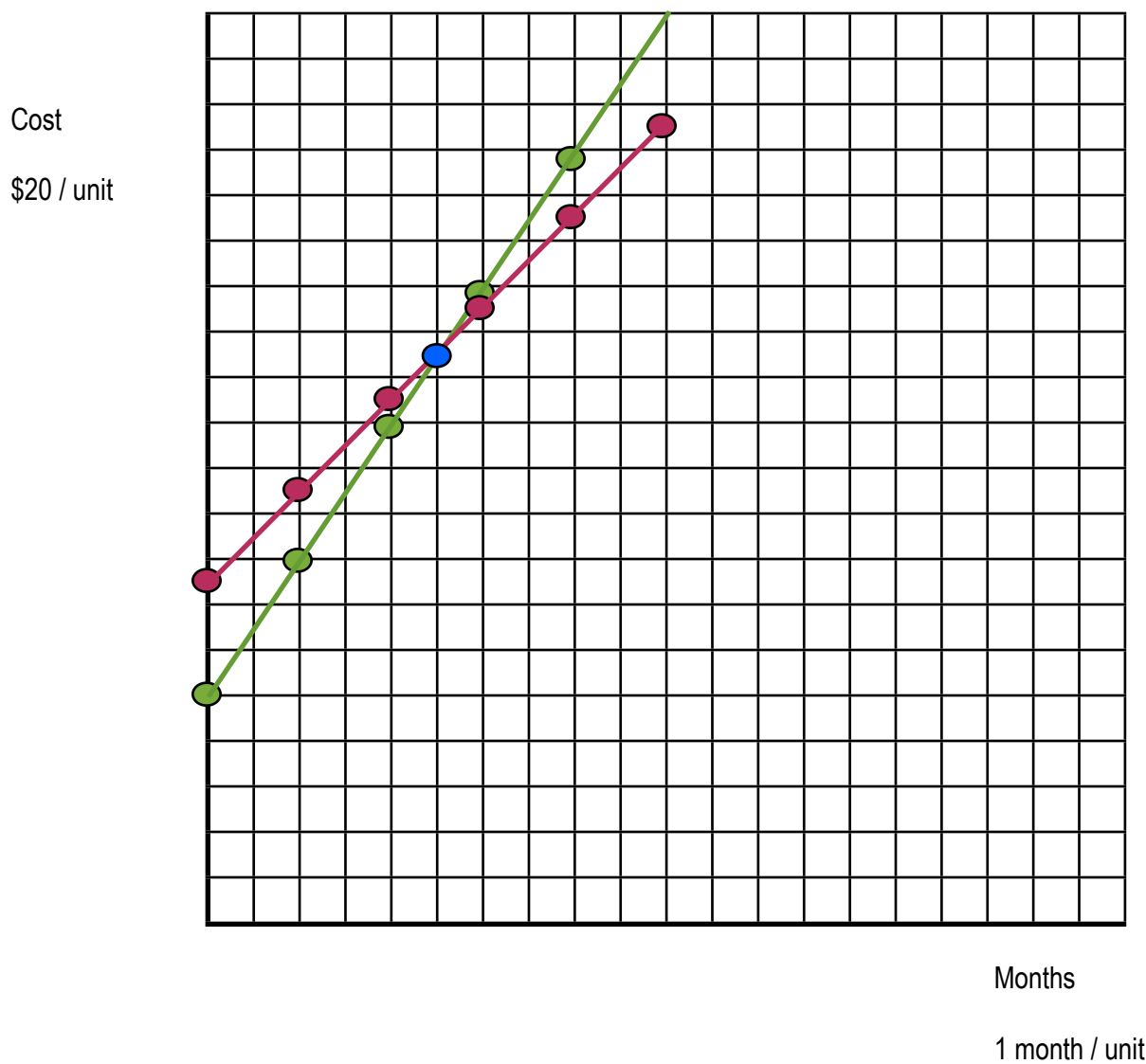


MATH 10
HOMEWORK ASSIGNMENT 1

- 11 a) Fitness Club CanFit $C = 20x + 150$
- b) Fitness "R" Us $C = 30x + 100$
- c) Graphed below — Fitness Club CanFit — Fitness "R" Us



- d) (5, 250)
- e) The point where both cost the same
- f) Fitness Club CanFit, it is cheaper

13

a) Jeff $C = 15h$



b) Hesketh $c = 150$

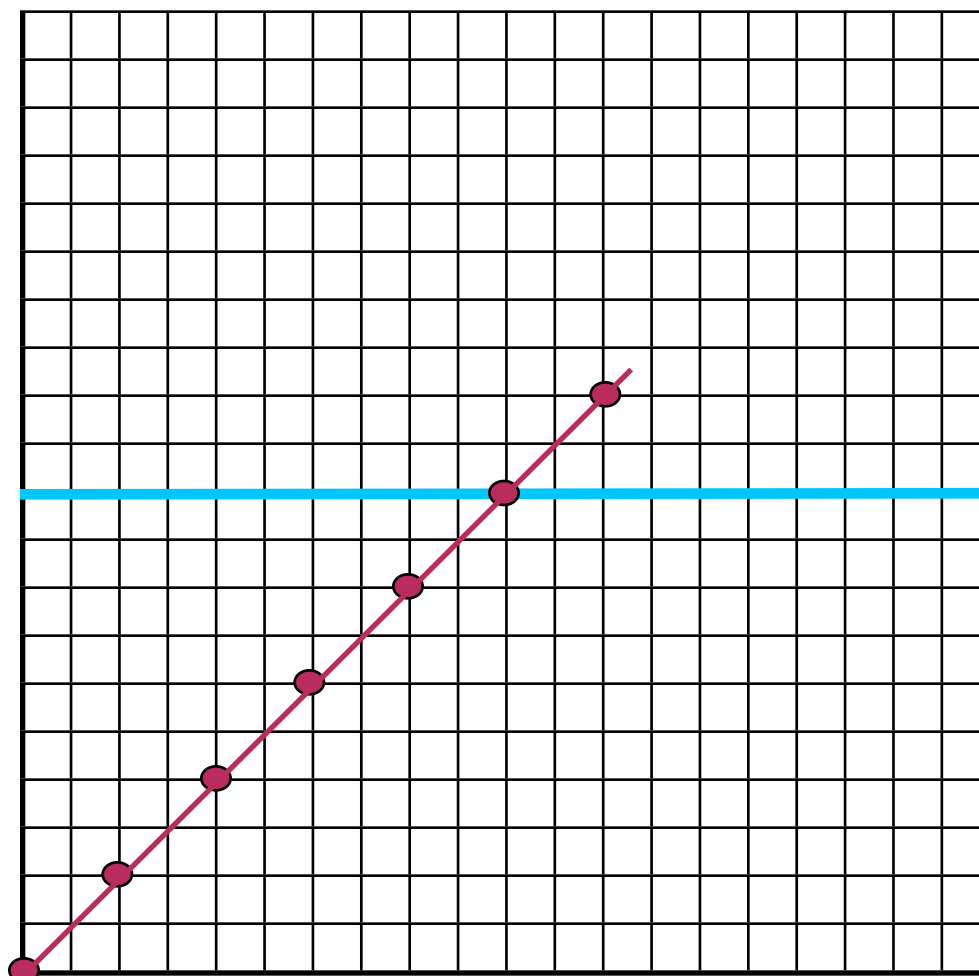


c) (10, 150)

d) 10 hours \$150

Cost

\$15 / unit



Hours

1 hour / unit